

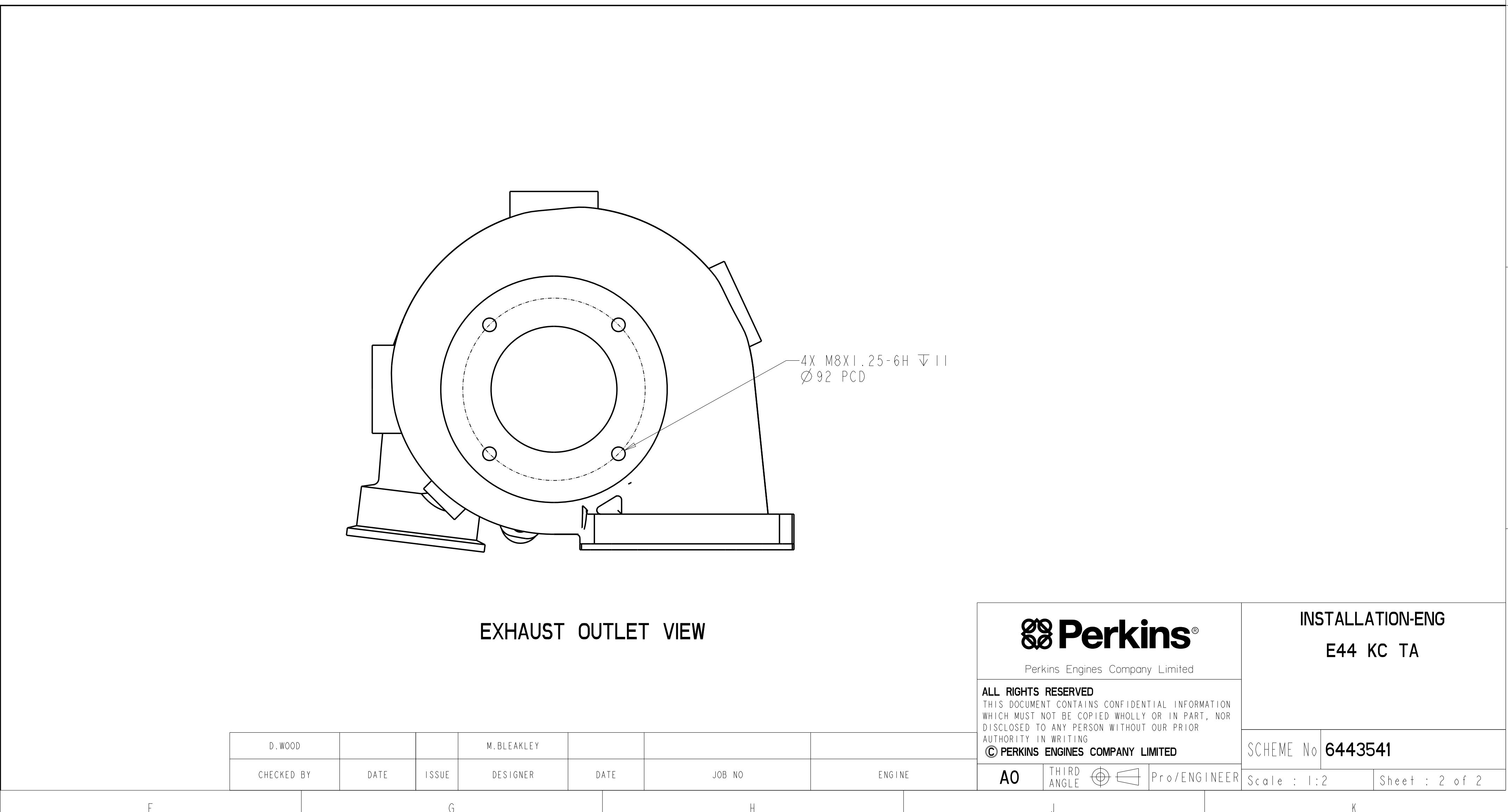
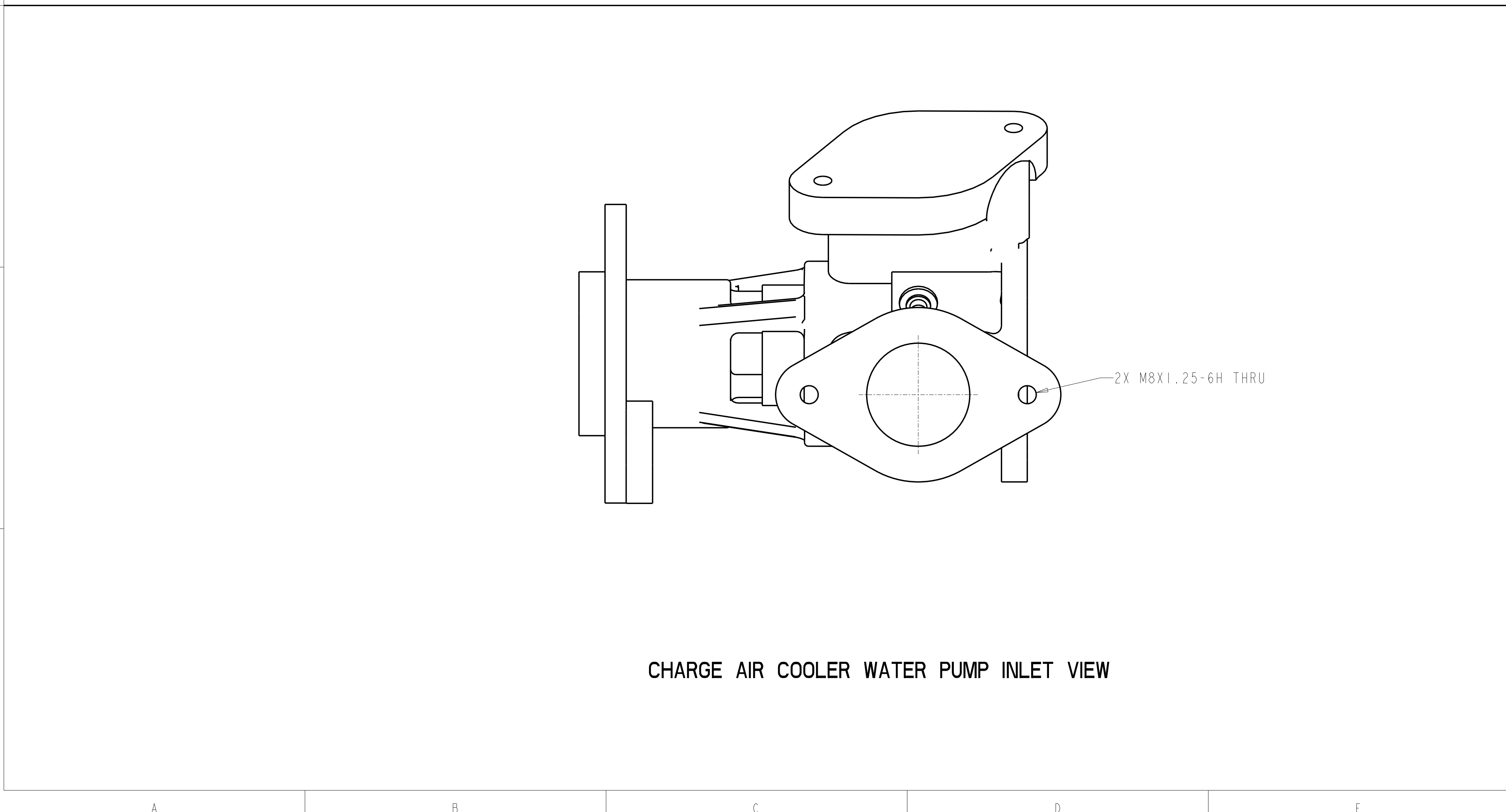
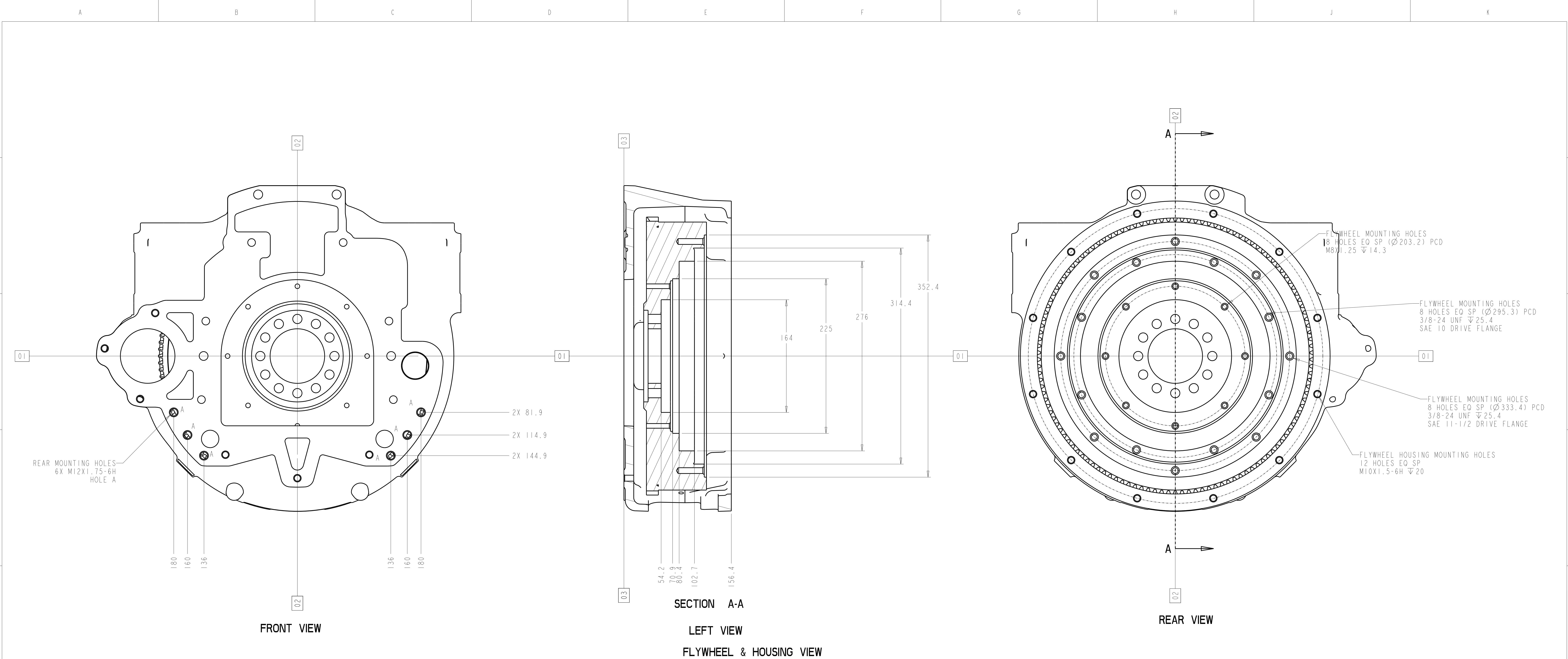
TOTAL DRY WEIGHT: 610kg

TYPICAL EXAMPLE ONLY. RATING AND OPTIONS ATTACHED
MAY CHANGE OVERALL DIMENSIONS.

D.WOOD		00	M.BLEAKLEY	07.11.23		E44
CHECKED BY	DATE	ISSUE	DESIGNER	DATE	JOB NO	ENGINE

Perkins Perkins Engines Company Limited		INSTALLATION-ENG E44 KC TA	
<small>ALL RIGHTS RESERVED</small> <small>THIS DOCUMENT CONTAINS CONFIDENTIAL INFORMATION WHICH MUST NOT BE COPIED WHOLLY OR IN PART, NOR DISCLOSED TO ANY PERSON WITHOUT OUR PRIOR AUTHORITY IN WRITING.</small>		<small>SCHEME No</small> 6443541	
<small>© PERKINS ENGINES COMPANY LIMITED</small>	<small>AO</small>	<small>THIRD ANGLE</small>	<small>Scale : 1:5</small>

Sheet : 1 of 2



D. WOOD			M. BLEAKLEY				
CHECKED BY	DATE	ISSUE	DESIGNER	DATE	JOB NO	ENGINE	

Perkins
Perkins Engines Company Limited

ALL RIGHTS RESERVED
THIS DOCUMENT CONTAINS CONFIDENTIAL INFORMATION
WHICH MUST NOT BE COPIED WHOLLY OR IN PART, NOR
DISCLOSED TO ANY PERSON WITHOUT OUR PRIOR
AUTHORITY IN WRITING.
© PERKINS ENGINES COMPANY LIMITED

INSTALLATION-ENG
E44 KC TA

SCHEME No **6443541**

Scale : 1:2 Sheet : 2 of 2